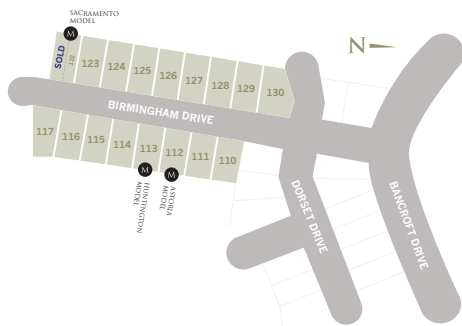


# THE LONGVIEW

TOTAL LIVING | 1983 sq. ft.



*Zulich Homes is pleased to share their newest Twin Villa Model, The LONGVIEW. This split entry design is unique in the fact that there are essentially 3 Master suites each with their own ensuite. The lower level is fully finished with loads of storage. Finished living space is approximately 1,983 sqft.*



*Hazelton's newest neighbour. Scenic View subdivision is nestled between Minnow Lake and Moonlight Beach on the north shore of Ramsey Lake. Close to all amenities, with several schools in the area, as well as shopping, beaches and parkland nearby*

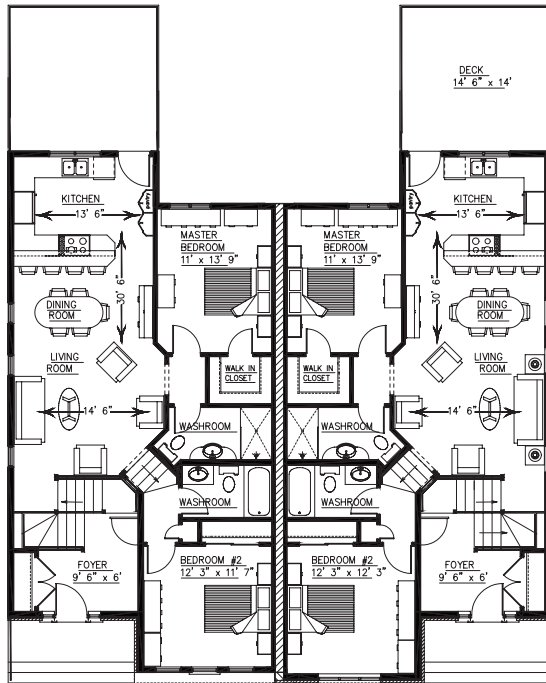
[www.zulich.com](http://www.zulich.com)

1730 Regent Street, Sudbury, Ontario P3E 3Z8 T. (705) 523-1000



# MAIN FLOOR

THE LONGVIEW MODEL | 1183 sq. ft.

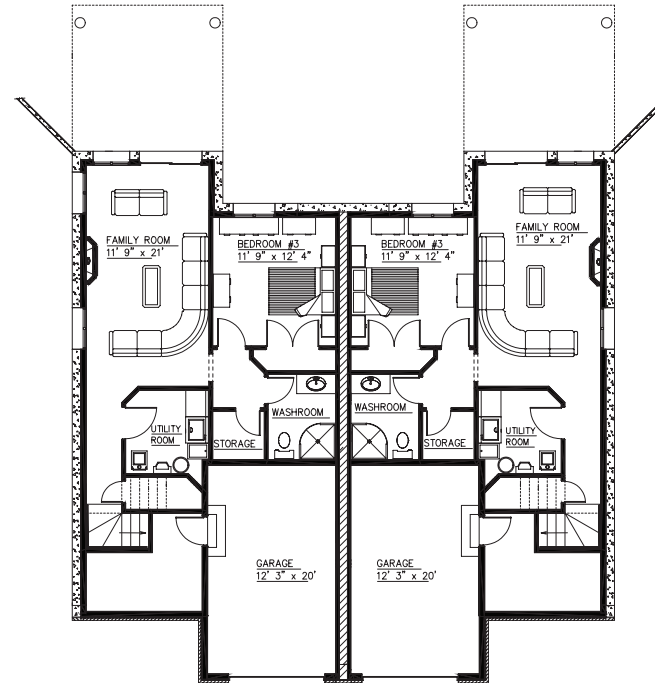


## Main Floor FEATURES

*A bright, generous foyer welcomes you home in split entry style. Open concept living lets light flow through the main living area. C-shaped kitchen with breakfast bar allows for an abundance of counter space. Second bedroom is just a few steps from the main floor. Home includes a fully finished garage.*

# SECOND FLOOR

THE LONGVIEW | 800 sq. ft.



## Lower Level FEATURES

*Oversized Family room with optional fireplace. Third bedroom, 3 piece bath, laundry and storage.*