

BOSTON MODEL

TOTAL LIVING | 2060 sq. ft. (2530 sq. ft.)



The BOSTON MODEL is a well appointed and very unique split entry bungalow with optional cathedral ceilings and custom stairs and railings. This 1416 sq.ft. home boasts open concept kitchen living and dining areas with walkout to deck. 3 bedrooms – 2 bathrooms - master ensuite and large finished family room.

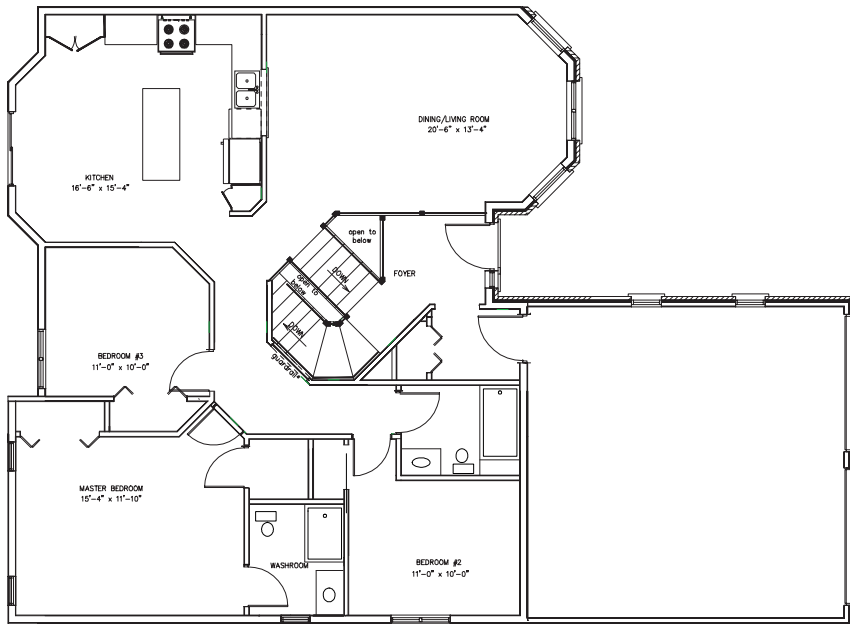
www.zulich.com

1730 Regent Street, Sudbury, Ontario P3E 3Z8 T. (705) 523-1000

ZULICH
homes

MAIN FLOOR

BOSTON MODEL | 1416 sq. ft.



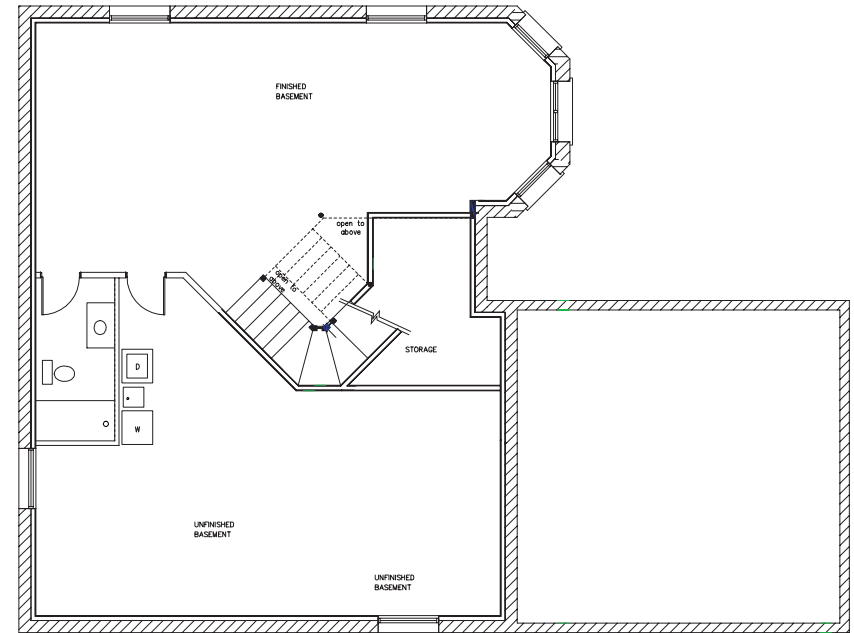
Main Floor FEATURES

2 bedroom and 3 bedroom with one bathroom plans available.

Kitchen can be full open concept to dining/living area.

FINISHED BASEMENT

BOSTON MODEL | 644 sq. ft.



Finished Basement FEATURES

Optional basement 3 piece bathroom. Optional 4th bedroom or office.

Total potential basement living space 1114 sq. ft.