

# MODERN 2 MODEL

TOTAL LIVING | 1817 sq. ft.



*The MODERN 2 MODEL is a spacious 2 Storey design with 1817 sq.ft. of well laid out space. The main floor features a mud room with 2pc guest bathroom – open living room and dining room – spacious kitchen with center island and walkout to deck. Upper level boasts 3 spacious bedrooms – oversized master with 4pc. ensuite and walk in closet in addition to a second 4pc bath and handy laundry closet.*

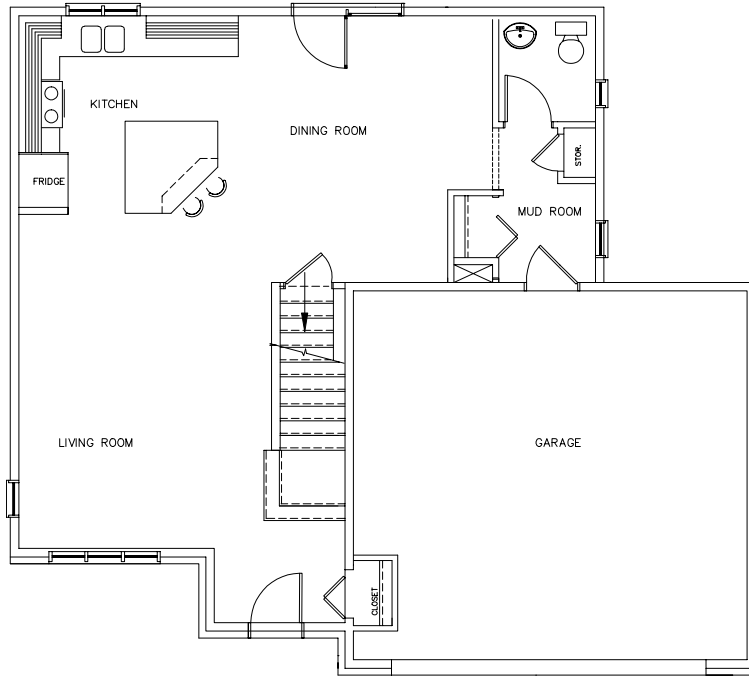
[www.zulich.com](http://www.zulich.com)

1730 Regent Street, Sudbury, Ontario P3E 3Z8 T. (705) 523-1000

ZULICH  
homes

# MAIN FLOOR

MODERN 2 MODEL | 798 sq. ft.



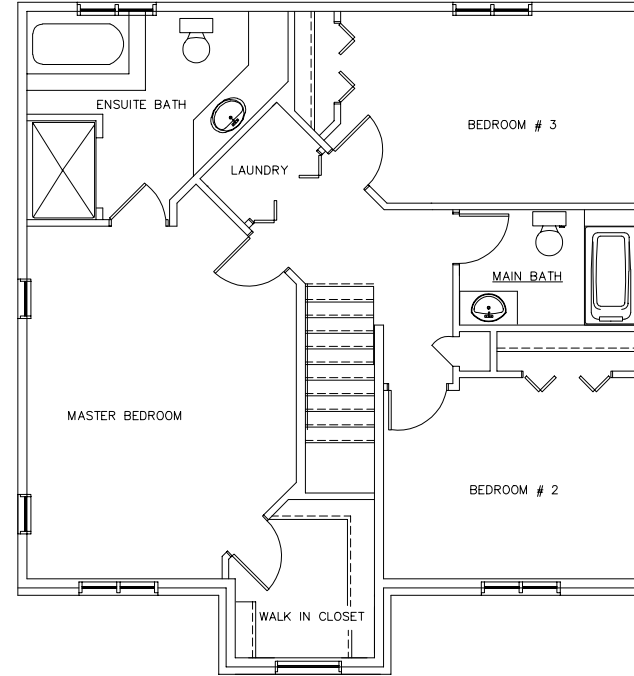
## Main Floor FEATURES

*Mudroom and guest powder room.*

*Open concept to dining, living and kitchen.*

# SECOND FLOOR

MODERN 2 MODEL | 1019 sq. ft.



## Second Floor FEATURES

*Large master bedroom with full ensuite and walk-in closet.*

*Laundry facilities adjacent to the bedrooms.*